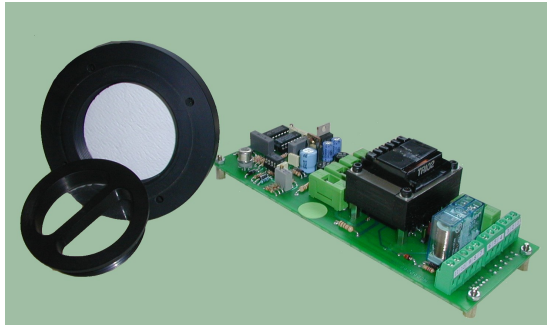


# OEM Components

## Condense Monitor

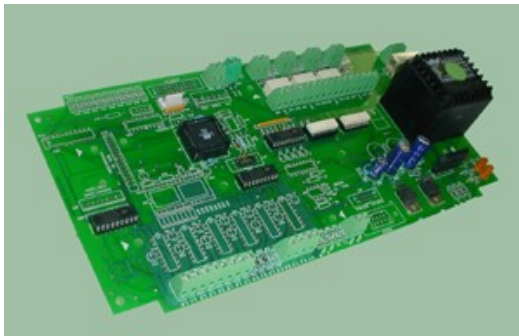


- Designed in order to operate a fine filtering of the sample gas and to verify the absence of condensates before entering the analyzers.
- With two electrodes pointed out controls the total liquid water absence and filters the sample with a fine filter with 1 micron retention degree.

Is made up of:

1. Electronic card: connected to the electrodes on filter it closes a contact in junction box when the minimal part of conductive liquid is present
2. Fine filter: composed from a body in Sinvex P where is placed a fine filter in fiber glass with retention degree of one micron; inside the body the electrodes are fixed. The body is closed watertight from a screw cap with transparent window for monitoring the conditions of the filter without interrupting the flow of the sample gas

## Uplc



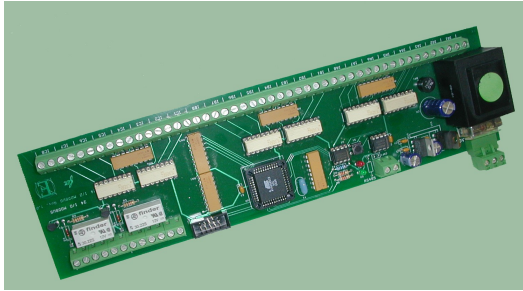
- Low cost card microprocessor based equipped with 24 digital I/O or 6 analog input.
- Moreover there is the possibility to connect a graphical LCD and to communicate with a serial port 485 or 232
- 8 of the 24 I/O can be set as output relays or opto-coupled input.
- The card can be set to the best regarding the specific application where is planned to be integrated in.

Fer strumenti has developed on this card two typical applications for the analysis systems:

- 1) Serial transmitter with 6 analogical input 4-20 mA: the serial output can be set like normal ASCII 232 or like client Mod-bus RTU.
- 2) Timer for the multiplexed sampling (up to 5 points) with pre-washing of the gas to analyze. The card comes with the opportune I/O and with a connector for the connection of a hexadecimal switch for the interval set-up.

# OEM Components

## Digital input card



- The electronic card is designed to control and to transmit the alarms or the faults of the analysis systems to supervision systems on protocol Modbus RTU.
- 24 digital input optocoupled.
- Power 230 Vac